

STJERNENE-
MAPPEN

1



Navn:

Klasse:

1

FIND BOGSTAVERNE I DIT NAVN. FARV VOKALERNE I DIT NAVN RØDE OG FARV KONSONANTERNE BLÅ.

A B C D E F G H

I J K L M N O P

Q R S T U V W

X Y Z Æ Ø Å

2

SKRIV DIT NAVN HER

3

TÆL VOKALER OG KONSONANTER I DIT NAVN.

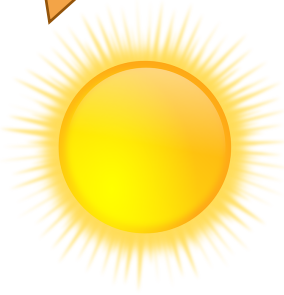
I mit navn er der

vokaler og

konsonanter

4

SKRIV DEN VOKAL, DER MANGLER



s _ _ l



sk _ _ _



sk _ _ _



b _ _ l



s _ _ l



sk _ _ _



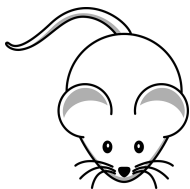
k _ _ t



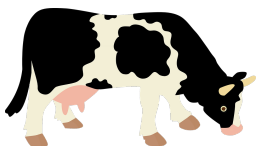
b _ _ l

5

SKRIV HELE ORDET





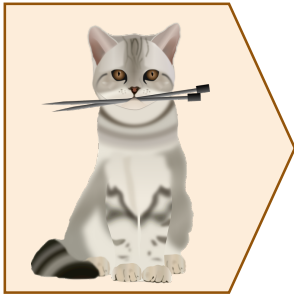




6

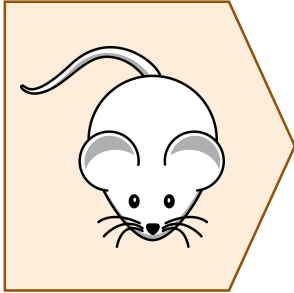
HVAD RIMER PÅ ORDET? SÆT EN STREG.

kat



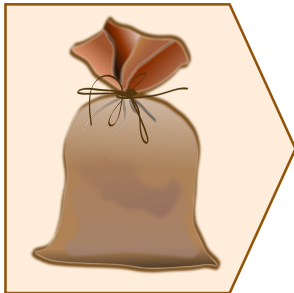
fly

mus



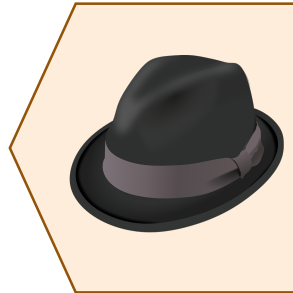
hus

sæk



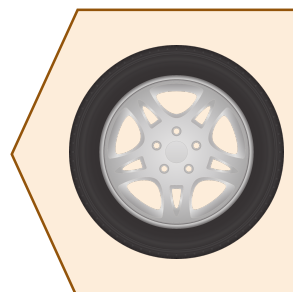
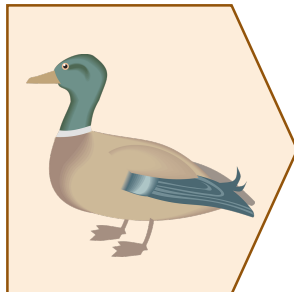
spand

stol



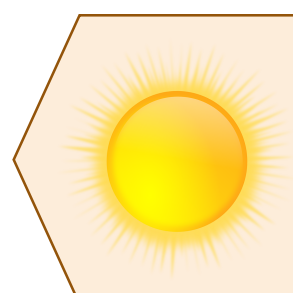
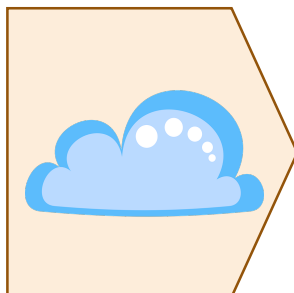
hat

and



dæk

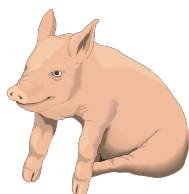
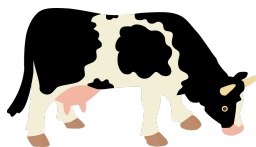
sky



sol

7

HVAD STARTER ORDET MED? SKRIV DET I KASSEN



8

SKRIV HELE ORDET













9

SÆT EN STREG TIL DET RIGTIGE BILLEDE

En grå bil



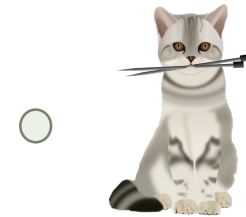
En gul bil



En blå bil



Her er en kat



Nu er det nat



En grå kat



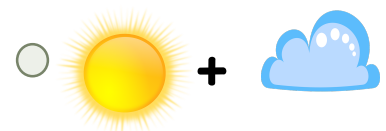
En sol og en sky



En hat og et bål



En kat og et bål



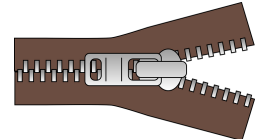
10

PRIK VOKALERNE I ORDET OG SÆT EN STREG TIL DET RIGTIGE BILLEDE.

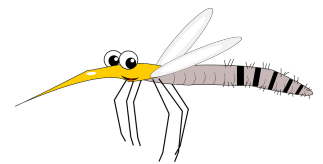
s a v



m y g



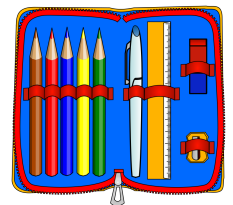
i g l o



l y n l å s



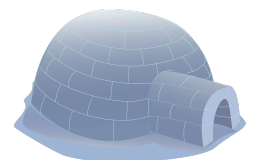
s a n d a l



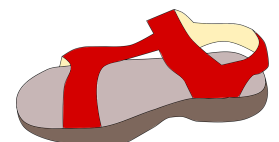
v i o l i n

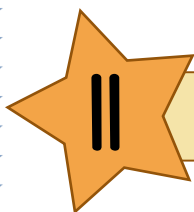


p e n a l h u s



p o l i t i b i l



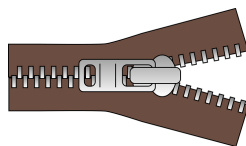


HVOR MANGE STAVELSER ER DER I ORDET? SÆT KRYDS



sofa

1 2 3 4



lynlås

1 2 3 4



sut

1 2 3 4



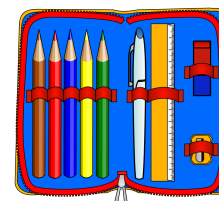
spand

1 2 3 4



hatte

1 2 3 4



penalhus

1 2 3 4



politibil

1 2 3 4



kaktus

1 2 3 4



lampe

1 2 3 4

GODT GÅET - DU ER FÆRDIG